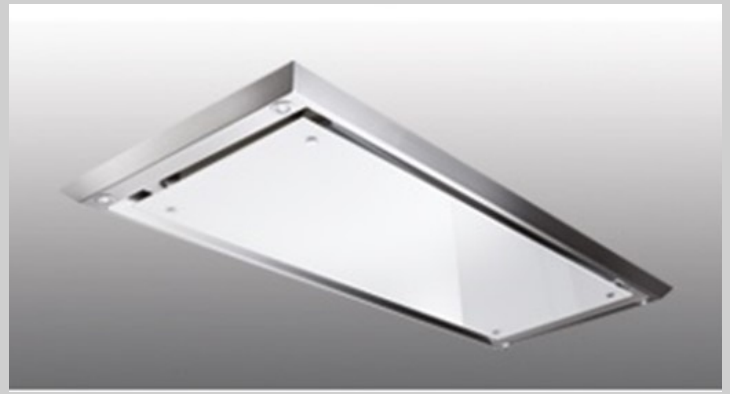




Slimline Ceiling Hood

Version
1200mm—Extra White Glass & Stainless Steel
Frame—H850 Motor



This photo is purely for information, it may not correspond to the selected version

FEATURES

White Glass
Stainless Steel Frame
Remote Control
Fits across the joists
Fits between the joists

TECHNICAL FEATURES

Installation Type
Ceiling

Dimensions
1200mm

Finish
White Glass & Stainless Steel
Frame

Motor
H850— 300-600m³/h

Type of Control
Remote Control

Speed Settings
4

Lighting
4 x LEDs—1.2W—4000K

Filter
Metallic filter— 9x260x240mm

PACKAGING

Net Weight
13kg

Volume
0.22m³

Packaging Size
Length - 950mm
Height - 390mm
Depth - 590mm

CONSUMPTION AND CONNECTION FEATURES

Maximum Consumption
159.8W

Current
3A Max

Voltage
220-240V

Motor Technical Data

Motor	H850 Motor
Airflow m ³ /h	300-600
Pressure Pa	414
Noise dB	61-71
Power W	155
Outlet Width mm	150
Energy Class	B

Cut-Out Dimensions:

